



26LHT

Multi-drop hot runner nozzle for side gating under 90°, without cold slugs, with conventional heating element

TECHNICAL DATA

26LHT

Melt channel Ød	6.0 mm
Quantity of tips	1, 2 or 4
Operating voltage	230 V _{AC} *

Nominal length of the nozzle (L) in mm

60	80	100
■	■	■

*Volts alternating current

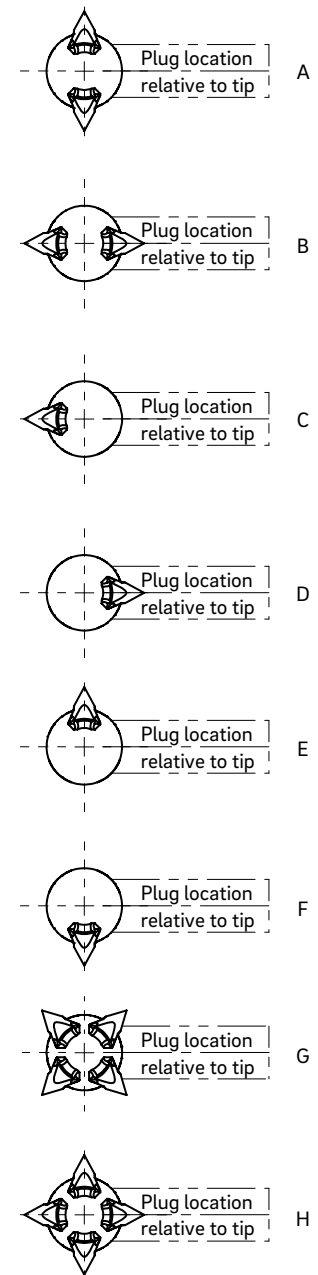
■ available

NOTE

Power connector CMT and thermocouple connector CMLK are to be ordered separately.

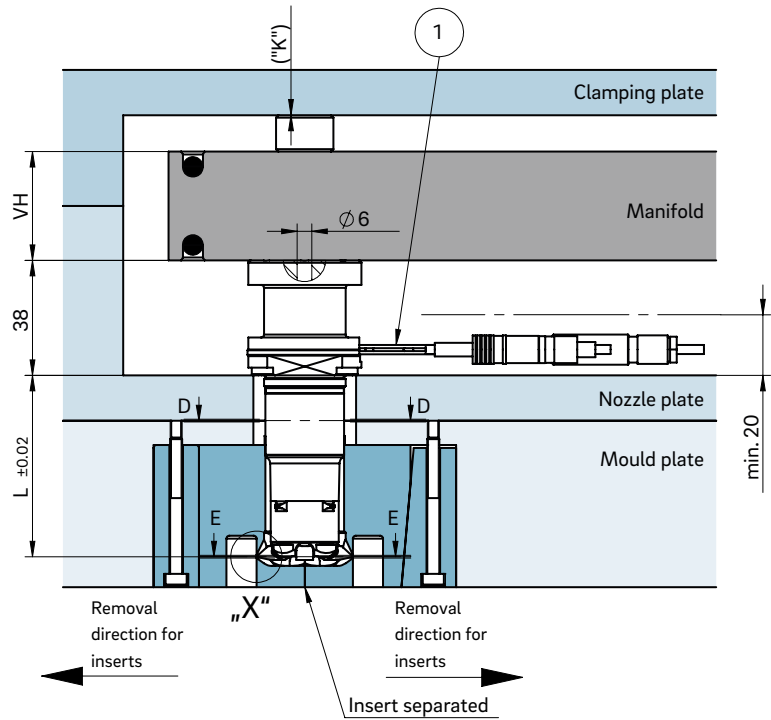
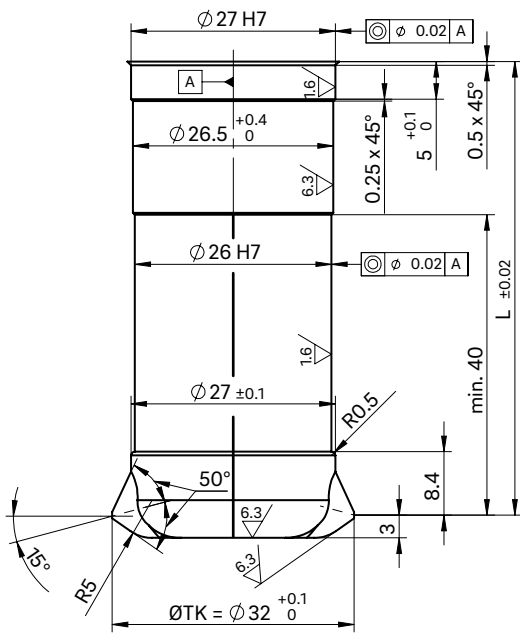


PLUG LOCATION RELATIVE TO TIP

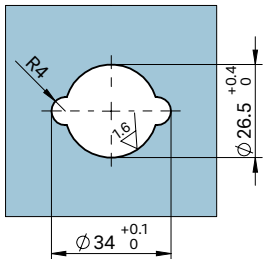




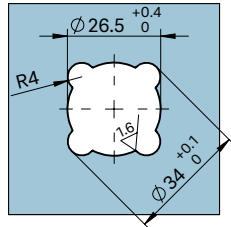
INSTALLATION



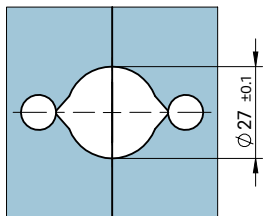
View D-D for two nozzle tips



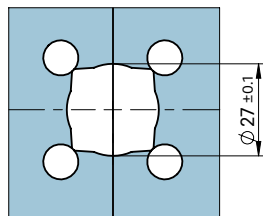
View D-D for four nozzle tips



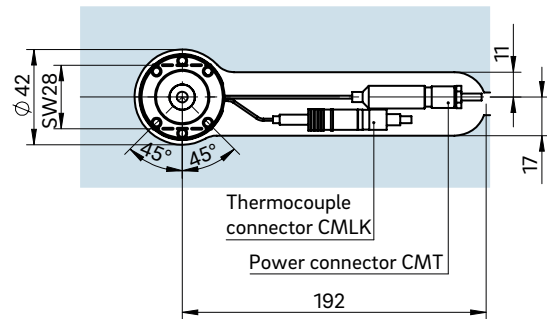
View E-E for two nozzle tips



View E-E for four nozzle tips

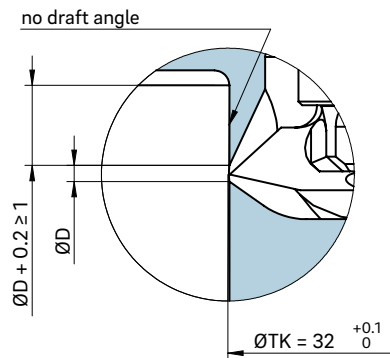


Example cutout for nozzle head, power and thermocouple plug connections

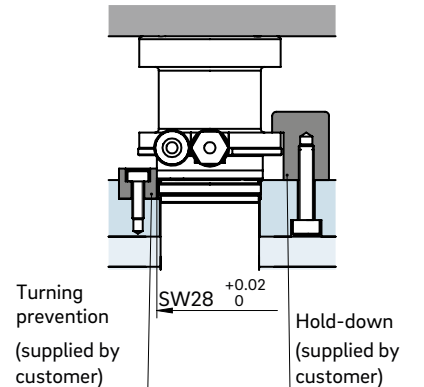


- ① Power and thermocouple plug connections in this area can only be bent once; minimum radius: R8
SW = flat area on nozzle head

Detail "D"



Turning prevention



The size "K" required for heat expansion is to be ensured by grinding the pressure pads (12 + 0.1 mm)! Determine the difference between the height of the manifold system and the height of the clamping plate when installed! ΔT specifies the temperature differential between the processing temperature and the mould temperature!

VH	ΔT (°C)	100	150	200	250	300	350
36 mm	K (mm)	0.021	0.059	0.098	0.137	0.177	0.217
46 mm	K (mm)	0.033	0.078	0.124	0.170	0.218	0.264
56 mm	K (mm)	0.046	0.097	0.150	0.203	0.258	0.311

To prevent open jet formations, injection should be carried out against a core, for example.