



3SGT 2-drop, 3-drop and 4-drop

Multi-drop hot runner nozzle for minimal cavity distances, with heated adapter

TECHNICAL DATA

3SGT 2-drop, 3-drop and 4-drop

Melt channel Ød 6 mm

Possible pitch circle diameter ØTK:

2-drop Ø 11 to Ø 31 mm

3-drop Ø 12 to Ø 31 mm

4-drop Ø 14 to Ø 31 mm

Adapter straight (G)/radius (R)/angle (W)

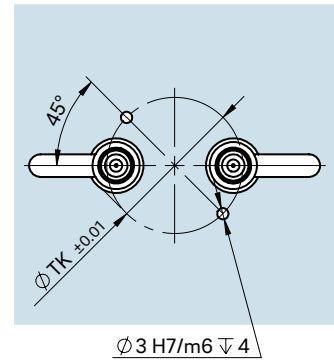
Operating voltage 230 V_{AC} *

Nominal length of the nozzle (L): 20 mm

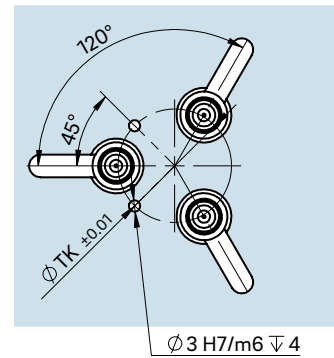
*Volts alternating current



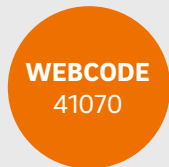
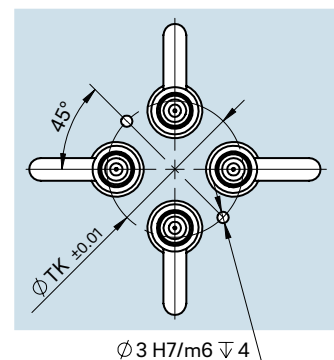
2-drop – cutout for nozzle and centring/positioning pin



3-drop – cutout for nozzle and centring/positioning pin



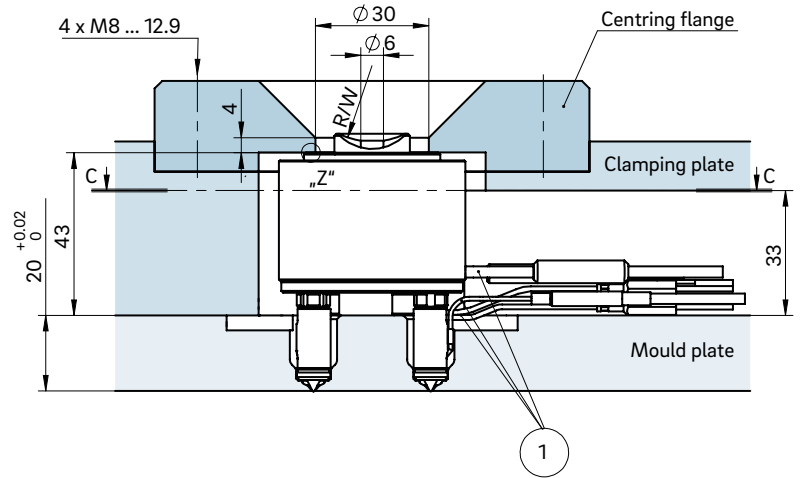
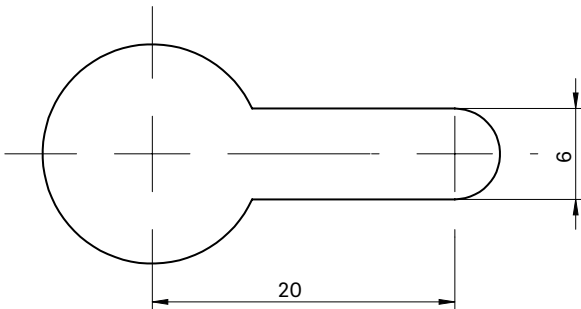
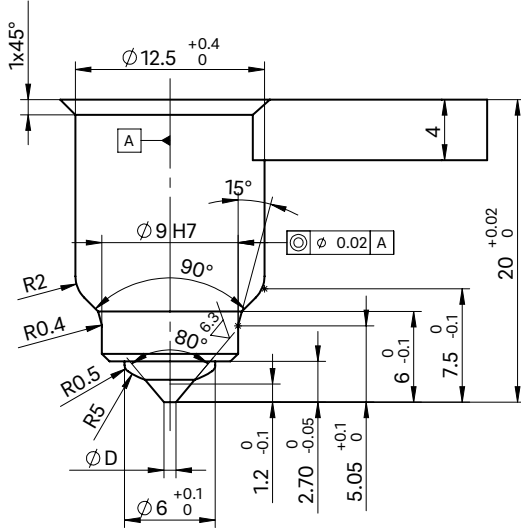
4-drop – cutout for nozzle and centring/positioning pin



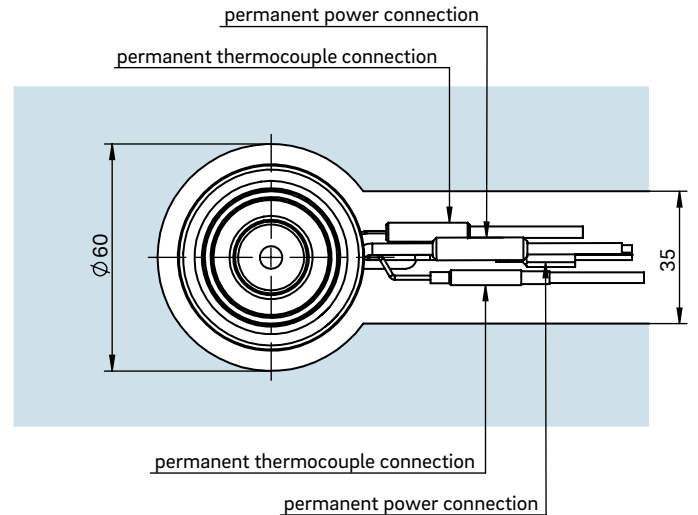


INSTALLATION

Open nozzle with tip



Cross-section C-C: Cutout for nozzle head, power and thermocouple plug connections



① Power and thermocouple plug connections in this area can only be bent once; minimum radius: R8

Dimension "K" required for heat expansion is to be ensured by grinding the location ring! Determine the difference between the height of the nozzle (with adapter) and the height of the structure when installed! ΔT specifies the temperature differential between the processing temperature and the mould temperature!

| ΔT (°C) | 100 | 150 | 200 | 250 | 300 | 350 |
|-----------------|------|------|------|------|-----|------|
| K (mm) | 0.01 | 0.03 | 0.05 | 0.07 | 0.1 | 0.11 |

Detail "Z"

