



Heated adapter type AHJ4-6

Heated adapter for using system nozzles as single nozzles

TECHNICAL DATA

AHJ4-6

Operating voltage 230 V_{AC} *

Adapter straight (G)/radius (R)/
angle (W)

Can be used with nozzle type/Delivery times:

Type	4SHF/DHF	5SHF/DHF 5SHT/DHT	6SHF/DHF 6SHT/DHT
AHJ4	■		
AHJ5		■	
AHJ6			■

*Volts alternating current

■ available

NOTE

Recommended for processing thermally sensitive plastics.

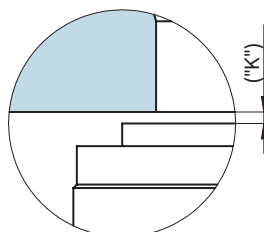
Using a heated adapter, the nozzle types specified above can also be used as single nozzles.

Specify the machine nozzle version when ordering.



Type	Heated adapter (mm)		Installation (mm)	
	Ød1	Ød	A	B
			Strength class 12.9 (DIN EN ISO 4762) Screw size	Strength class 12.9 (DIN EN ISO 4762) Screw size
AHJ4	4.0	3.8	4 x M10 x ...	2 x M5 x 16
AHJ5	5.0	4.8	4 x M10 x ...	2 x M5 x 16
AHJ6	6.0	6.0	4 x M12 x ...	2 x M5 x 16

Detail "Z"



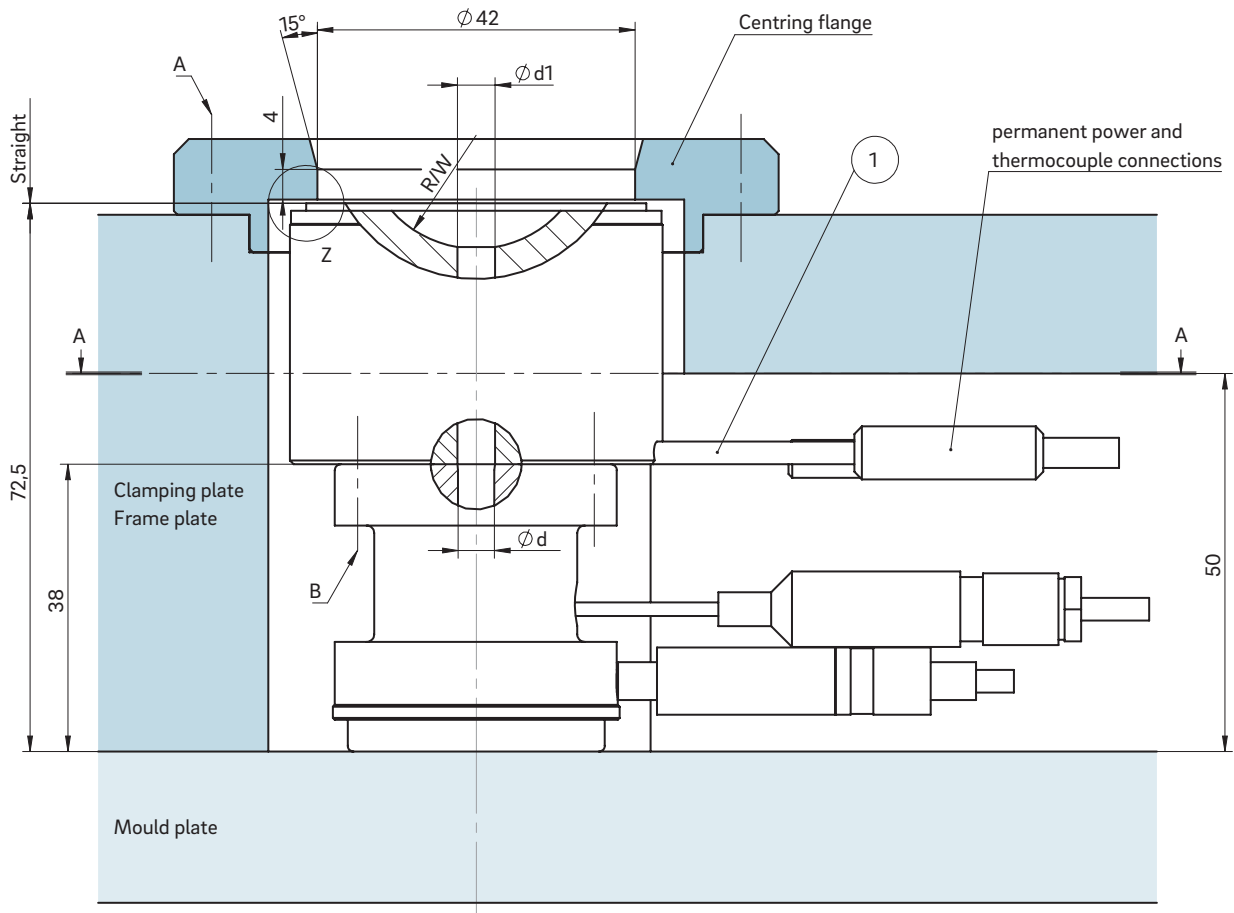
Dimension "K" required for heat expansion is to be ensured by grinding the locating ring! Determine the difference between the height of the nozzle (with adapter) and the height of the structure when installed! ΔT specifies the temperature differential between the processing temperature and the mould temperature!

ΔT (°C)	100	150	200	250	300	350
K (mm)	0.06	0.08	0.09	0.11	0.13	0.16

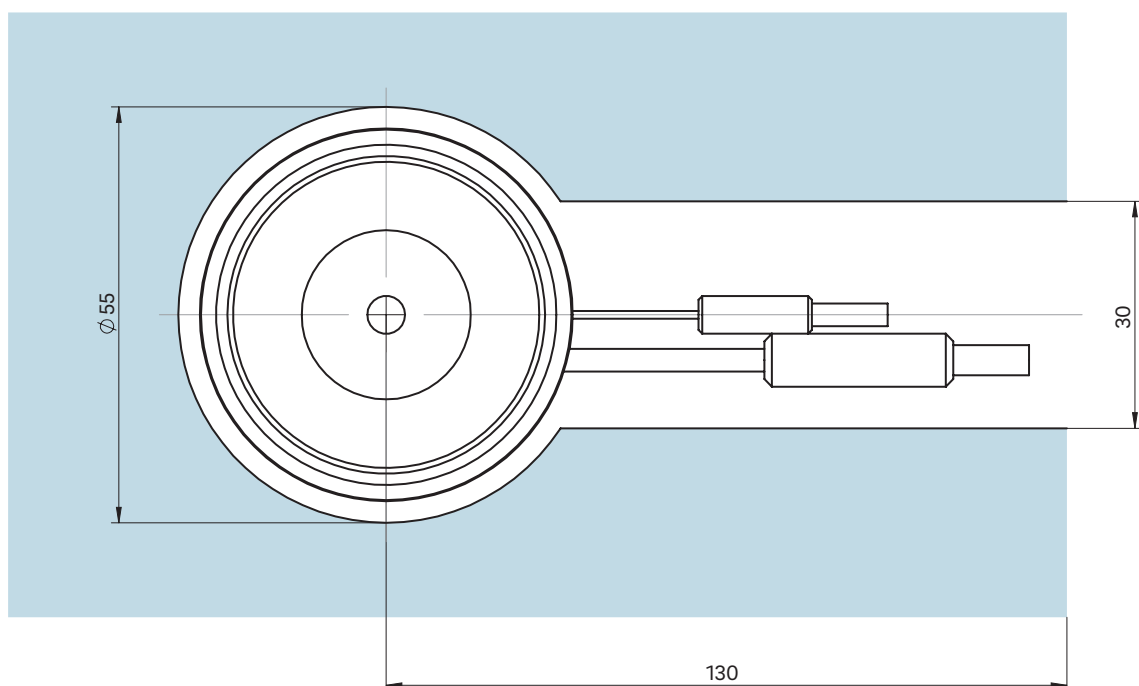
WEBCODE
24010



INSTALLATION



Cross-section A-A: Cutout for heated adapter AHJ4-6



① Power and thermocouple plug connections in this area can be bent once; minimum radius: R8