



# Gate bushing type VC/VCV

## Versions VC and VCV with wear protection

### TECHNICAL DATA

#### Dimensions

	Version (mm)									
	ØA	ØS	ØT <sub>1</sub>	s	ØA <sub>1</sub>	R	ØP	t <sub>1</sub>	t	
15VC	35	15	22	5	36	5	12	2.3	2.5	
20VC	35	20	28	5	36	5	16	2.3	2.5	
22VC/VCV	38	22	32	5	39	8	16	2.3	2.5	
26VC/VCV	45	26	36	5	46 <sup>1,2</sup>	8	16	2.3	2.5	
32VC/VCV	50	32	42	9	56	13	20	3.3	3.5	
38VC/VCV	59	38	48	12	60	16	26	4.3	4.5	

<sup>1</sup>ØA<sub>1</sub> = 49 mm with nozzle type 8DET

<sup>2</sup>ØA<sub>1</sub> = 56 mm with nozzle type 8DHT

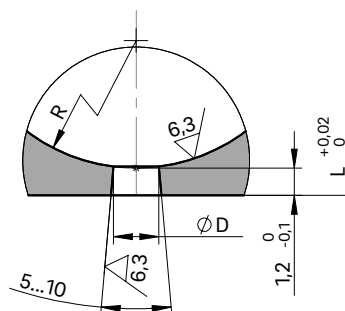
### NOTE

When using a gate bushing of size ØS = 26 mm, ØS = 32 mm or ØS = 38 mm in conjunction with nozzle types \_ET and \_HT, we recommend consulting with the engineers.

After eroding the gate bushing, it must be annealed to remove stress (1 hour at 470 °C).



### ANTECHAMBER VERSIONS C AND D

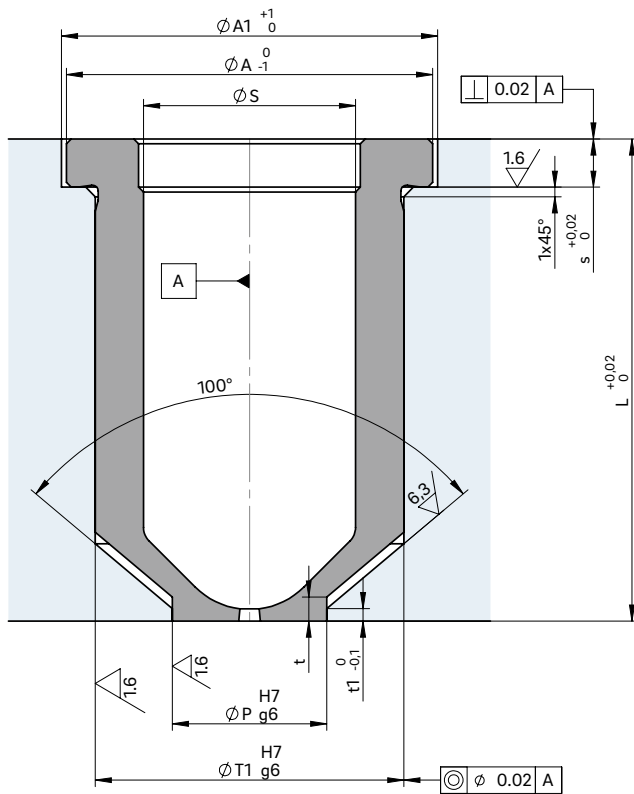


For open nozzles with a straight outlet for antechamber version C and D and nozzle piece A

WEBCODE  
23060



**GATE BUSHING INSTALLATION**



Nozzle type designation	Gate bushing type/length (mm)															
	L= 50		L= 60		L= 80		L= 100		L= 120		L= 120		L= 120		L= 120	
4DHF	■	15VC	■	15VC	■	15VC										
4DTT	■	15VC	■	15VC	■	15VC										
4DMT	■	20VC	■	20VC	■	20VC			■	20VC						
5DHT	■	22VC	□	22VCV	■	22VC	□	22VCV	■	22VC	□	22VCV				
5DMT	■	22VC	□	22VCV	■	22VC	□	22VCV	■	22VC	□	22VCV	■	22VC	□	22VCV
6DHF	■	22VC	□	22VCV	■	22VC	□	22VCV	■	22VC	□	22VCV	■	22VC	□	22VCV
6DTT	■	22VC	□	22VCV	■	22VC	□	22VCV	■	22VC	□	22VCV	■	22VC	□	22VCV
6DHT	■	26VC	□	26VCV	■	26VC	□	26VCV	■	26VC	□	26VCV	■	26VC	□	26VCV
6DMT	■	26VC	□	26VCV	■	26VC	□	26VCV	■	26VC	□	26VCV	■	26VC	□	26VCV
8DET	■	26VC	□	26VCV	■	26VC	□	26VCV	■	26VC	□	26VCV	■	26VC	□	26VCV
8DHF	■	26VC	□	26VCV	■	26VC	□	26VCV	■	26VC	□	26VCV	■	26VC	□	26VCV
8DHT	■	26VC	□	26VCV	■	26VC	□	26VCV	■	26VC	□	26VCV	■	26VC	□	26VCV
10DHT					■	32VC	□	32VCV	■	32VC	□	32VCV	■	32VC	□	32VCV
12DET					■	38VC	□	38VCV	■	38VC	□	38VCV	■	38VC	□	38VCV
12DHT					■	38VC	□	38VCV	■	38VC	□	38VCV	■	38VC	□	38VCV

■ available □ on request