



## Hot runner nozzle type 4STT/4DTT

Open system nozzle with conventional heating element, front-loading

### TECHNICAL DATA

#### 4STT/4DTT

Melt channel Ød 3.8 mm

Nozzle type STT – open with tip  
DTT – open with straight outlet

Operating voltage 230 V<sub>AC</sub> \*

Nominal length of the nozzle (L) in mm

50 60 80



Contact us for other nozzle lengths!

\*Volts alternating current

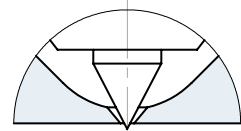
■ available

### NOTE

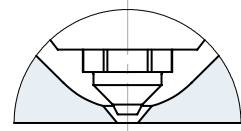
Power connector CMT and thermocouple connector CMLK are to be ordered separately.



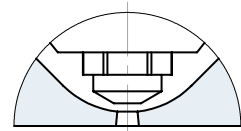
STT – open nozzle with tip  
version "Tip"  
Antechamber version A



DTT – open nozzle with straight outlet  
version C  
Antechamber version A



DTT – open nozzle with straight outlet  
version A  
Antechamber version C

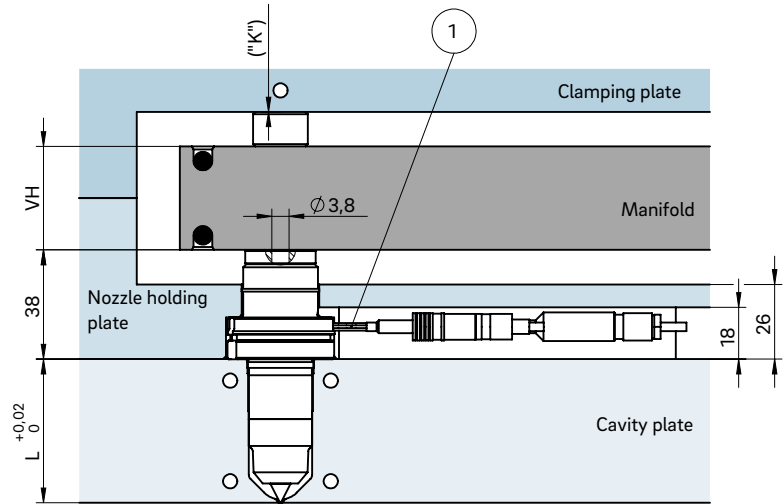
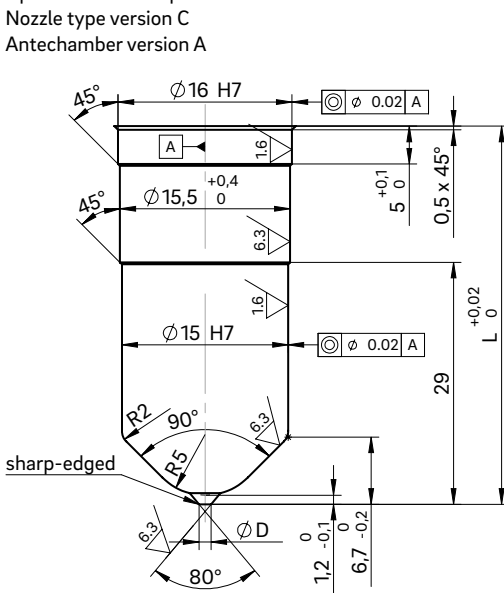


WEBCODE  
22180



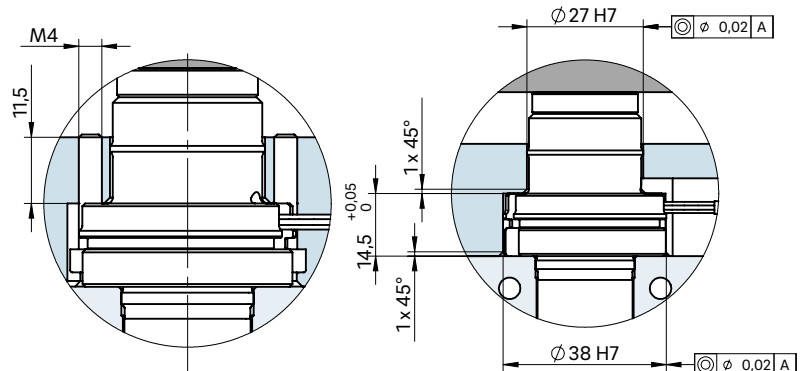
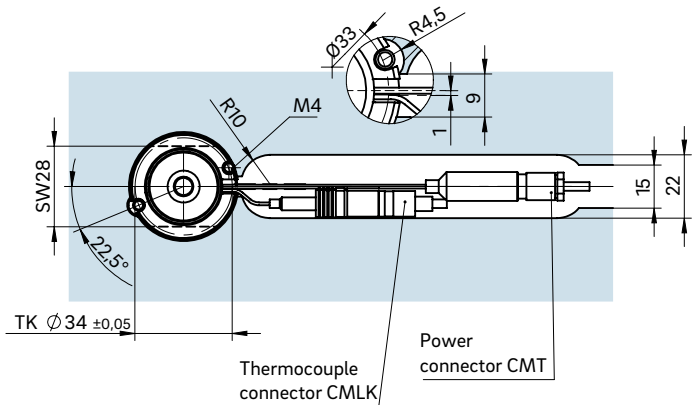
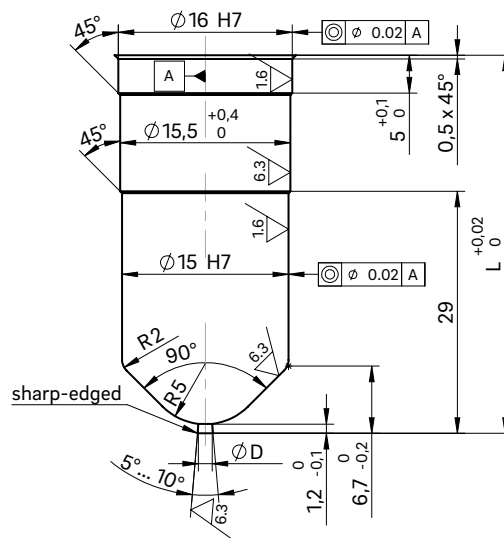
## INSTALLATION

Open nozzle with tip  
Nozzle type version C  
Antechamber version A



Example cutout for nozzle head, power and thermocouple plug connections

Open nozzle with straight outlet  
Nozzle type version A  
Antechamber version C



Dimension "K" required for heat expansion is to be ensured by grinding the pressure pad (12 + 0.1 mm)! Determine the difference between the height of the manifold system and the height of the clamping plate when installed!  $\Delta T$  specifies the temperature differential between the processing temperature and the mould temperature!

VH	$\Delta T$ (°C)	100	150	200	250	300	350
36 mm	K (mm)	0.021	0.059	0.098	0.137	0.177	0.217
46 mm	K (mm)	0.033	0.078	0.124	0.170	0.218	0.264
56 mm	K (mm)	0.046	0.097	0.150	0.203	0.258	0.311

① Power and thermocouple plug connections in this area can only be bent once; minimum radius: R8

SW = flat area on nozzle head