



Index

Cold-runner technology		Page
Application information - Customer-/ Application data		10. 2
<hr/>		
Cold-runner nozzle		
DKW/NKW		Nozzle connected with the manifold
DMW/NMW		Nozzle in the group housing connected with the manifold



Cold-runner application information

Inquiry Order Spare part

Customer data

Customer ref.:
Company:
Department:
Technical contact:
Street:
ZIP:
City:
Phone:
Fax:
E-Mail:
AB-No.:
Date:
Commercial contact:
End customer:
Quotation Date
Price info Date
Order Date
<input type="checkbox"/> Sales rep visit requested
<input type="checkbox"/> Callback desired
Others:

Application data

Part description:
Type of industry:
Automotive <input type="checkbox"/> Consumer <input type="checkbox"/>
Electro/Electronic <input type="checkbox"/> Medical <input type="checkbox"/>
Packaging <input type="checkbox"/> Tech. parts <input type="checkbox"/>
Other:
Material type LSR <input type="checkbox"/> HTV <input type="checkbox"/>
Other materials:
Shore-hardness:
Manufacturer:
Description:
Shot weight per nozzle (g):
Injection time (sec.) approx:
Max. flow length (mm):
Wall thickness (mm):
Type of gating Direct <input type="checkbox"/>
Indirect <input type="checkbox"/>
Intermediate gate <input type="checkbox"/>
Part drawing attached <input type="checkbox"/>
Frequently color changing <input type="checkbox"/>

Manifold

Straight manifold <input type="checkbox"/> H-manifold <input type="checkbox"/>
Cross manifold <input type="checkbox"/> T-manifold <input type="checkbox"/>
Star manifold <input type="checkbox"/> Special <input type="checkbox"/>
Mechanical cleaning <input type="checkbox"/>
Balanced <input type="checkbox"/>
Partially balanced <input type="checkbox"/>
Nozzle pitch:

Cold Runner Nozzle

Nozzle type:
Number of nozzles:
Nozzle length 50 mm <input type="checkbox"/> 80 mm <input type="checkbox"/>
Number of cavities:

Actuation valve-gate

Single needle valve <input type="checkbox"/>
Lifting plate mechanism <input type="checkbox"/>
Actuation medium Pneumatic <input type="checkbox"/>
Elektric <input type="checkbox"/>

Info to molding machine

Size moulding machine:
Locking pressure:
Gate-ø (mm):
0.4 <input type="checkbox"/> 0.6 <input type="checkbox"/> 0.8 <input type="checkbox"/> 1.0 <input type="checkbox"/>
Special-ø:

Mold/Tool

New <input type="checkbox"/> Modification <input type="checkbox"/>
Mold size Length (mm):
Width (mm):
Height (mm):
Geometry machine nozzle:
Cold halve to quote <input type="checkbox"/>
Cooling water connections by customer <input type="checkbox"/>
Type:

Controller

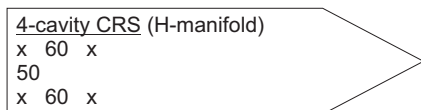
Available <input type="checkbox"/>
GÜNTHER Type:
Others:
Number of control circuit:
Controller to quote <input type="checkbox"/>

Spare Parts

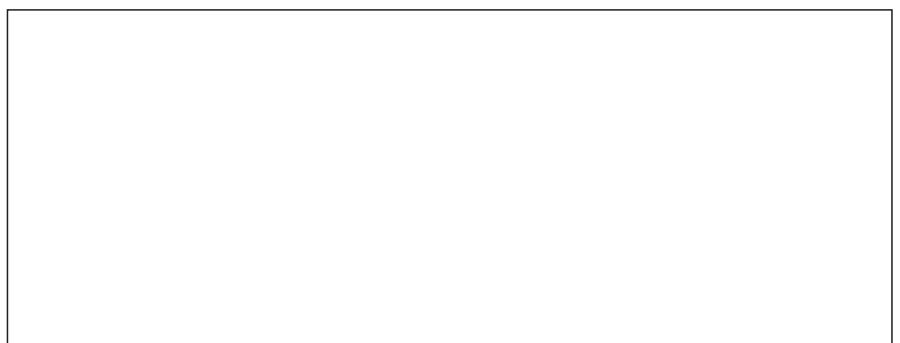
AB-Order-No.:
Serial number of nozzle:
Required parts:

Specification sketch of the nozzle arrangement specifying position (X/Y) [view onto the nozzle tip] per Fax/ Scan

Simple design example (field right):

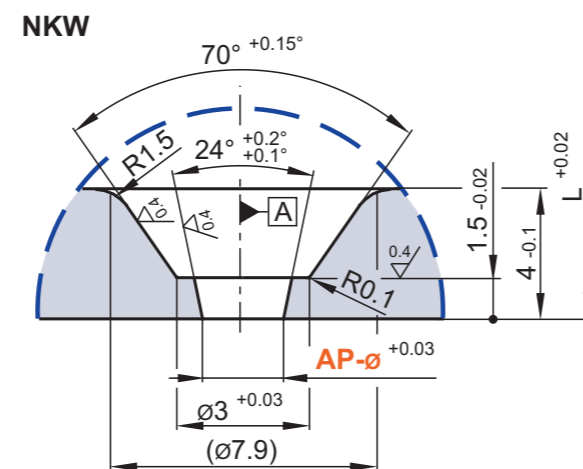
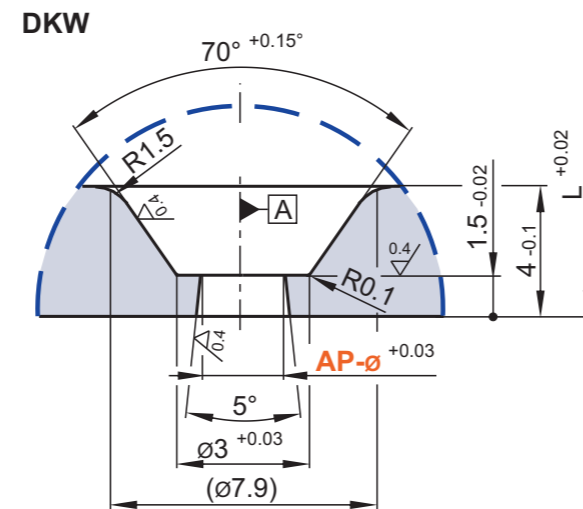
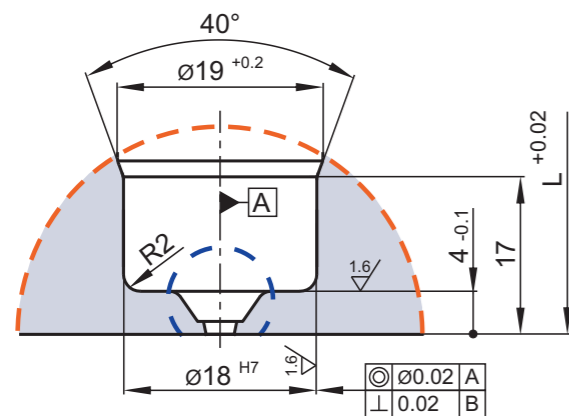
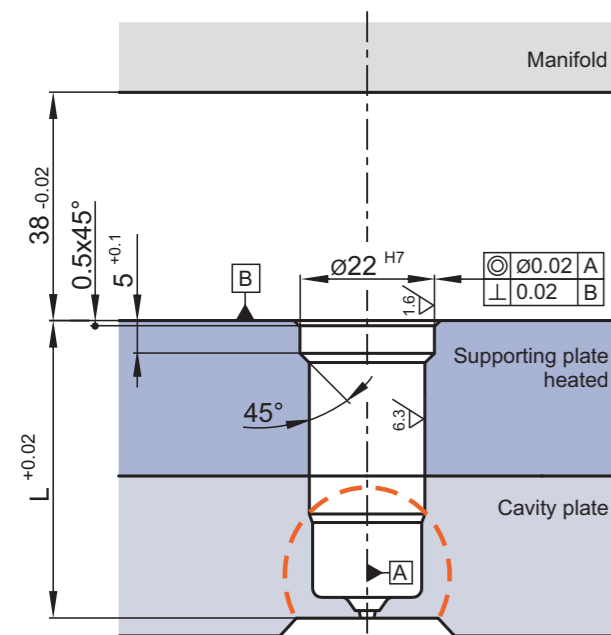


"Cold-runner inquiry form" available at www.guenther-heisskanal.de/download

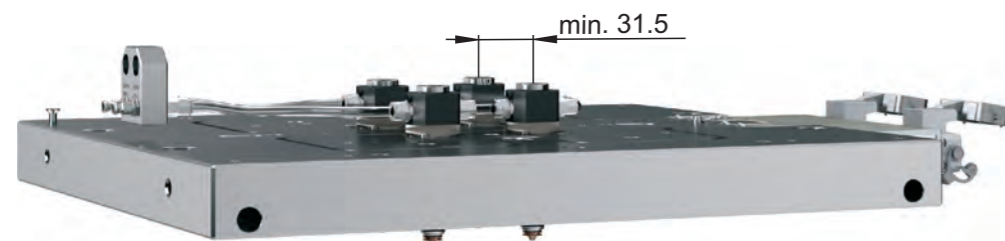


Cold-runner nozzles type 5DKW/-NKW

Assembly



4-cavity arrangement of the cold-runner nozzle



Order code

Example: **Valve-gate nozzle 5NKW50**

- 5 = Material tube- \varnothing 4,8 mm
- NKW = Valve-gate nozzle connected with the manifold
- 50 = Length 50 mm

Please indicate in your order following:
Material type, article, part weight, kind of gating and gate- \varnothing .

Notes

"Cold side" as a standardized component

A cooling circuit can supply up to 4 series-connected nozzles with cooling media.

The heated supporting plate serves for mounting/unmounting for the nozzle or coupling/decoupling the cavity plate. If requested by a customer, the heated supporting plate can be designed to heat the cavity plate.

The needles are adjusted from outside during the injection process, without having to unmount the nozzle side.

An additional o-ring on the nozzle shaft provides the necessary sealing tightness in the mold, plus better thermal separation.

Nozzle piece and needle guide are kept in position very accurately by a Belleville spring washer, which also compensates for thermal expansion.

If necessary, wearing parts such as nozzle piece, needle guide, needle, sealing, Belleville spring washer, and o-ring can be replaced very easily.

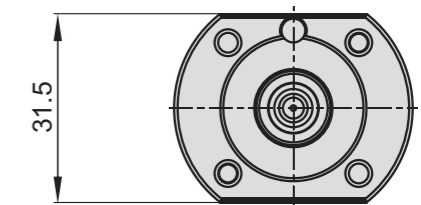
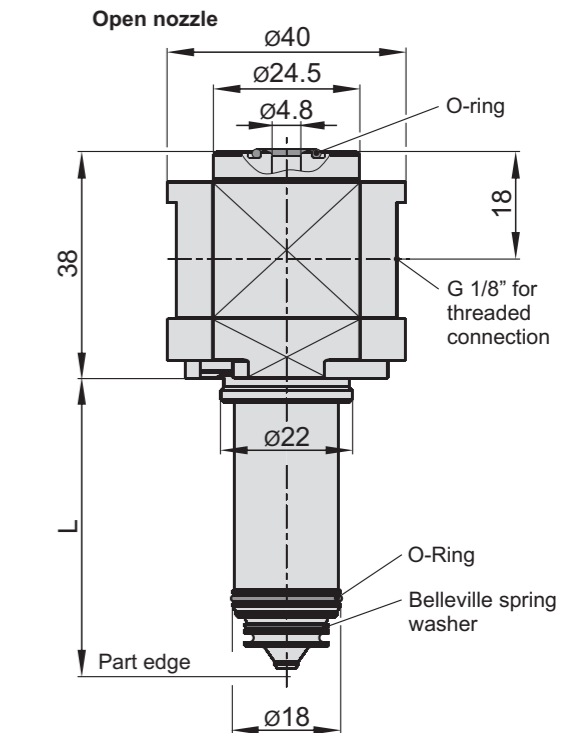
AP- \varnothing Gate- \varnothing 0.4; 0.6; 0.8 and 1.0 mm as standard

Notes

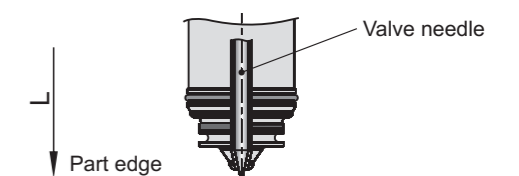
Following parts must be ordered separately:

- Threaded connection
- Connecting hoses, flexible
- For replacement purposes

Order code	Index
80.774	Sealing set
Z62_14x0.8/7.2	Belleville spring washer



Nozzle with needle guide



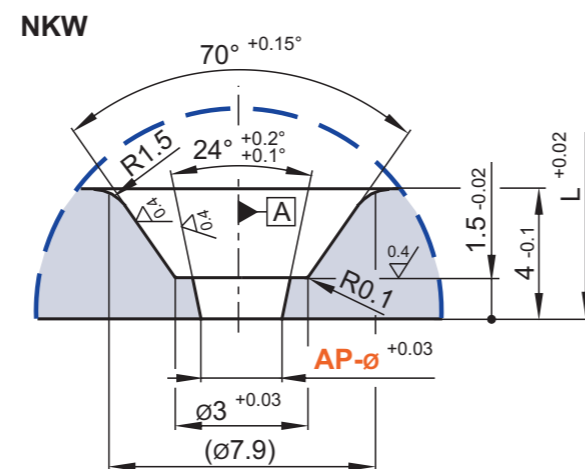
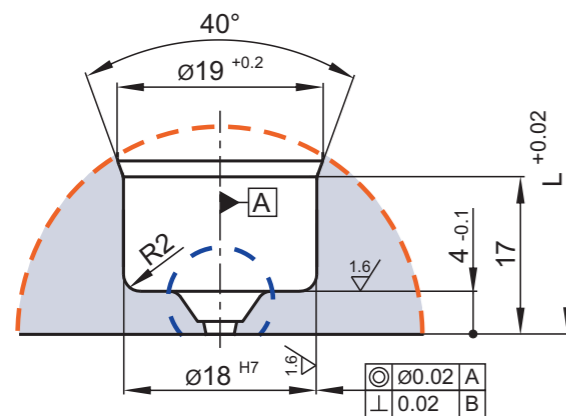
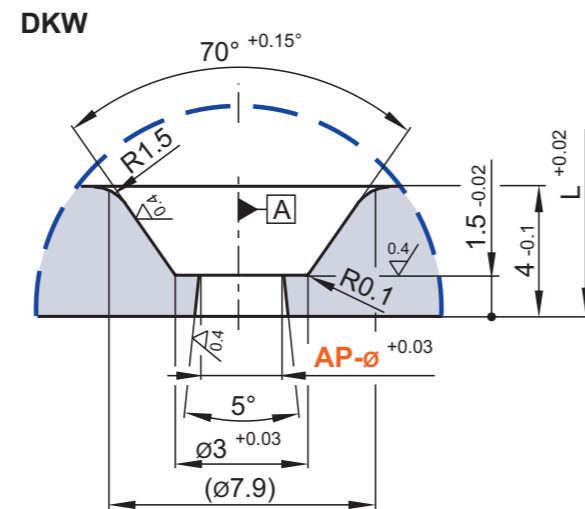
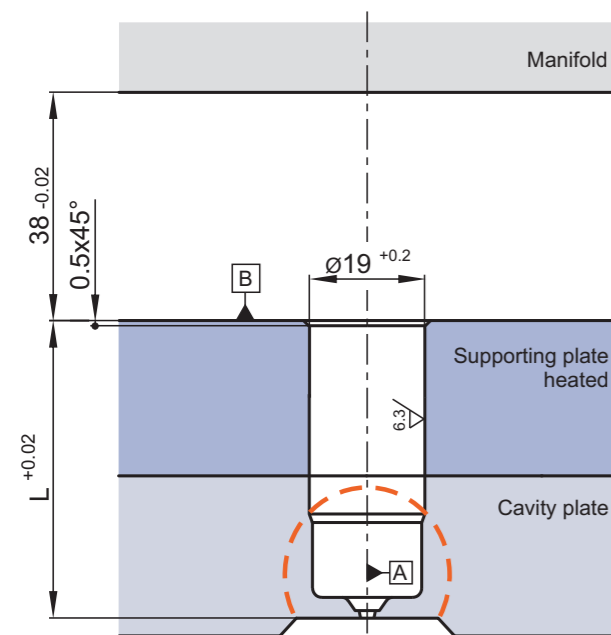
Delivery time

Nozzle type		Nozzle length L (mm)		
Open	Needle	50	80	
5DKW	5NKW	•	•	

• = in stock

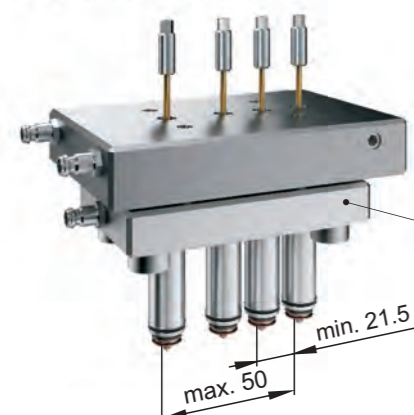
Cold-runner nozzles type 5DMW/-NMW

Assembly



Group housing: Arrangement of the cold-runner nozzle single, in-line or parallel up to 4-cavity possible.

In-line arrangement with a manifold



Arrangement of pitch diameter (Tk-Ø)



Order code

Example: **Valve-gate nozzle 5NMW50**

5 = Material tube-Ø 4,8 mm

NMW = Valve-gate nozzle at group housing, connected with the manifold

50 = Length 50 mm

Please indicate in your order following:
Material type, article, part weight, kind of gating and gate-Ø.

Notes

"Cold side" as a standardized component

A cooling circuit can supply up to 4 series-connected nozzles with cooling media.

The heated supporting plate serves for mounting/unmounting for the nozzle or coupling/decoupling the cavity plate. If requested by a customer, the heated supporting plate can be designed to heat the cavity plate.

The needles are adjusted from outside during the injection process, without having to unmount the nozzle side.

An additional o-ring on the nozzle shaft provides the necessary sealing tightness in the mold, plus better thermal separation.

Nozzle piece and needle guide are kept in position very accurately by a Belleville spring washer, which also compensates for thermal expansion.

If necessary, wearing parts such as nozzle piece, needle guide, needle, sealing, Belleville spring washer, and o-ring can be replaced very easily.

AP-Ø Gate-Ø 0.4; 0.6; 0.8 and 1.0 mm as standard

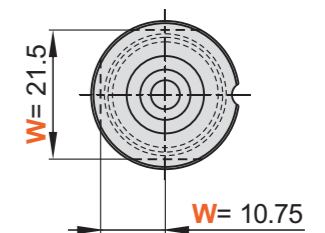
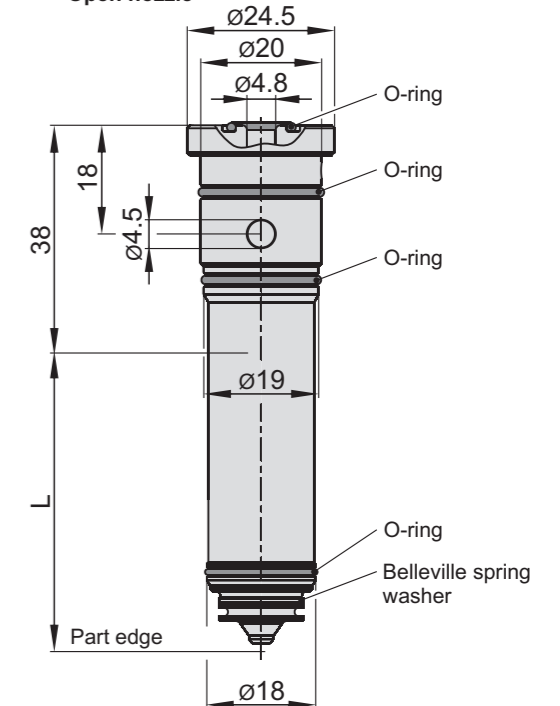
W Nozzle head flattened

Notes

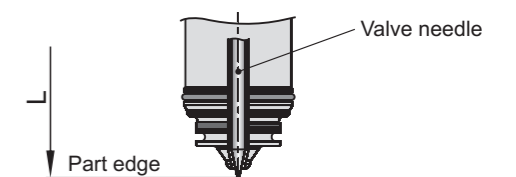
For replacement purposes

Order code	Index
80.774	Sealing set
Z62_14x0,8/7.2	Belleville spring washer

Open nozzle



Nozzle with needle guide



Delivery time

Nozzle type		Nozzle length L (mm)	
Open	Needle	50	80
5DMW	5NMW	•	•

• = in stock